



Baby Car Seat Cover

Materials

1 yd of polar fleece

1 ½ yds of 1-inch non-roll elastic

Thread to match

This tutorial will show you how to make a fleece car seat cover. These types of covers are very easy to make as the polar fleece stretches to give a nice snug fit around your car seat. I came up with this pattern for my son when he was an infant born in January during an ice storm and blankets would easily fall off or make the handle of his car seat slippery to carry.

I would recommend using quality 200 wt fleece, not microfleece, to really keep the cold away from the baby. I love Malden Mills fleece, you can purchase it online, and sometimes you can find it at Hancock's Fabrics. It's top quality fleece, it's the yummy stuff you find at Land's End. There is no comparison to Malden Mills fleece and it's priced around the same as the lower quality stuff and it does not pill like the stuff you find at fabric stores. If you buy the regular alpine/polar-type fleece at Joann's or even Walmart, it's around 200 wt.

**Since my babies aren't babies anymore, my infant car seat is in storage and I have not had a chance to take a picture of the cover on the seat (or find older pictures from when my son was in his), but this tutorial will be updated with a picture very soon as I can.



Directions:

1. Measure your car seat. Measure the width and length and for each one, make sure to measure over the edges about 2 ½ inches over the edge to the sides, then add 2 inches to that measurement. So, for an Evenflo car seat, the measurements I had were approximately:

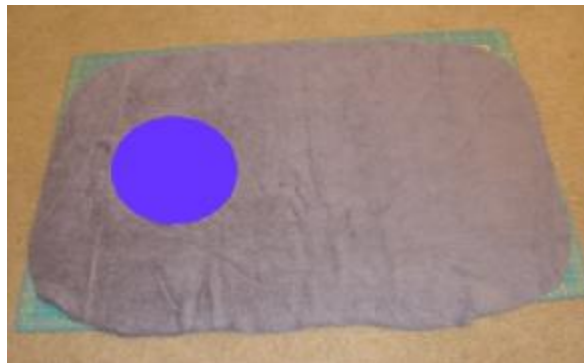
33.5 inches in length x 21 inches in width

2. Cut the fleece in a large rounded rectangle based on the width and length. For the above example, cut an oval roughly 35.5 x 23.



3. Cut a circle of fleece about 7-9 inches in diameter, dependent on how big your baby is. I am paranoid about any possibility of a baby suffocating, so I use a very large hole so that if he leaned to one side or the other, there is no way he would be under the cover. The hole also stretches when it's on the seat, so in the picture above it looks smaller than it really is.

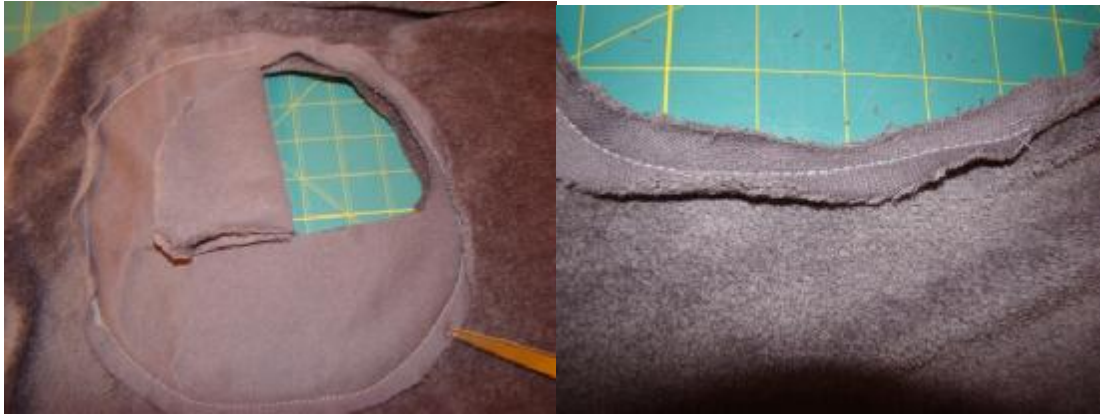
4. Then, pin the circle so that the top edge of the circle is about 9 to 10 inches from the top edge of the cover. (Sometimes if you want a perfect fit, you can put the baby in the car seat and eyeball exactly where his head falls, and then lay the cover over the seat and pin the circle to that same spot.)



5. Sew around the edge of the circle with a ¼ inch seam allowance.



Then cut out the inside of the circle and cover. Make sure you cut the circle down to ¼ inch seam allowance.



6. Push the edges of the seam to the back of the cover and then top stitch around the hole. This creates a soft edge that won't rub baby.



7. Sew a casing for the 1-inch elastic, make sure to leave 1 inch or so open to insert the elastic.



8. Insert the elastic, make sure you use enough elastic that it stretches easily over the seat, I like to test it with the elastic pinned closed before I sew it together. Sew the elastic ends together, and sew the opening in the casing closed.

And...you're done!